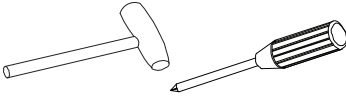


HENRIBS
HENRICS

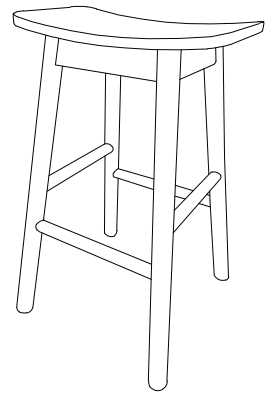
Never use
power tools
unless
instructed.

You will need
a rubber mallet and a screw driver



lucio

Assembly Instructions Henri Stool



Before assembly please check you have all parts listed below.

Please assemble on a clean and flat surface, such as carpet or cardboard to prevent scratches

(do not assemble on your floor). PLEASE NOTE: We've tried to make this chair as easy to assemble as possible.

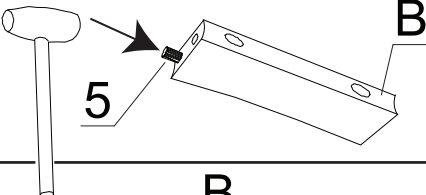
In the unlikely event you have problems putting it together or missing pieces, please contact us. Details below.

PARTS LIST

A legs X 2	B top rail X 2	C support bars X 2	1 JCBC BOLT M6 X 60MM (RB) X 4	2 JCBC BOLT M6 X 50MM (RB) X 4	3 SPRING WASHER 5/16" (RB) X 8	4 FLAT WASHER 6 X 13MM (RB) X 8
	D seat X 1	5 WOOD DOWEL M10 X 30MM X 4	6 PH SCREW M4 X 32MM X 4	7 ALLEN KEY M4 (BALL SHAPE) X 1	 Please recycle these instructions	

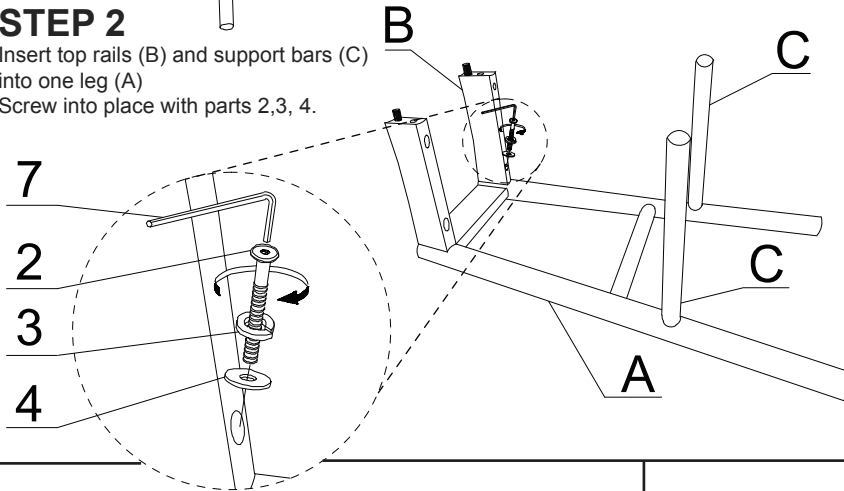
STEP 1

Add dowels X 4 (5) to top rails (B). Tap into place with rubber mallet.



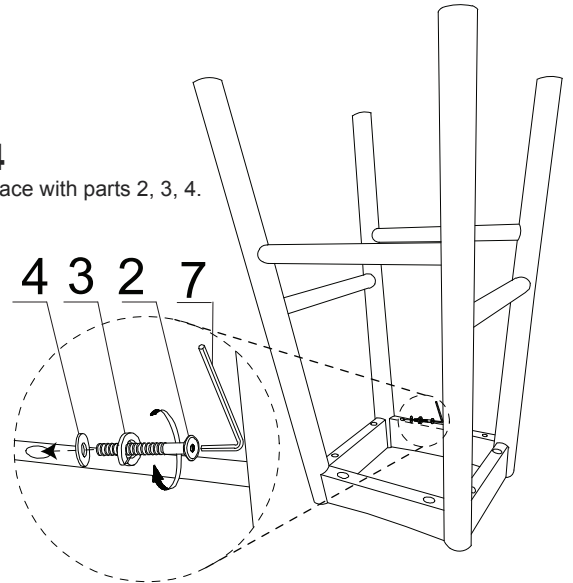
STEP 2

Insert top rails (B) and support bars (C) into one leg (A). Screw into place with parts 2, 3, 4.



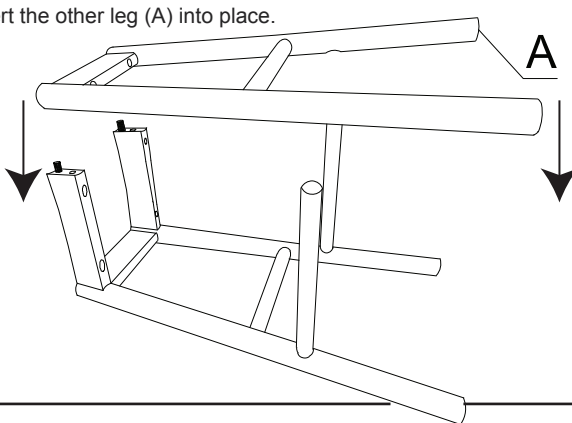
STEP 4

Screw into place with parts 2, 3, 4.



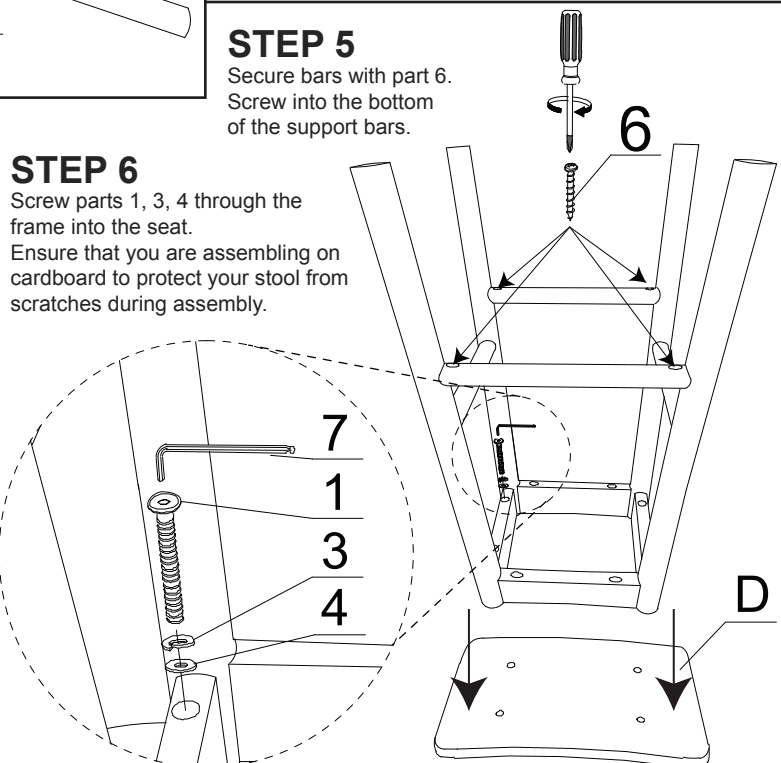
STEP 3

Insert the other leg (A) into place.



STEP 6

Screw parts 1, 3, 4 through the frame into the seat. Ensure that you are assembling on cardboard to protect your stool from scratches during assembly.



Exclusively distributed in AU and NZ by Chairforce.
Thank you for your purchase.
To learn more about our products please
visit www.chairforce.com.au and www.chairforce.co.nz
AU: Call: 08 9436 8570
Email: customerforce@brayco.com.au
NZ: Call: 09 271 5000
Email: sales@chairforce.co.nz